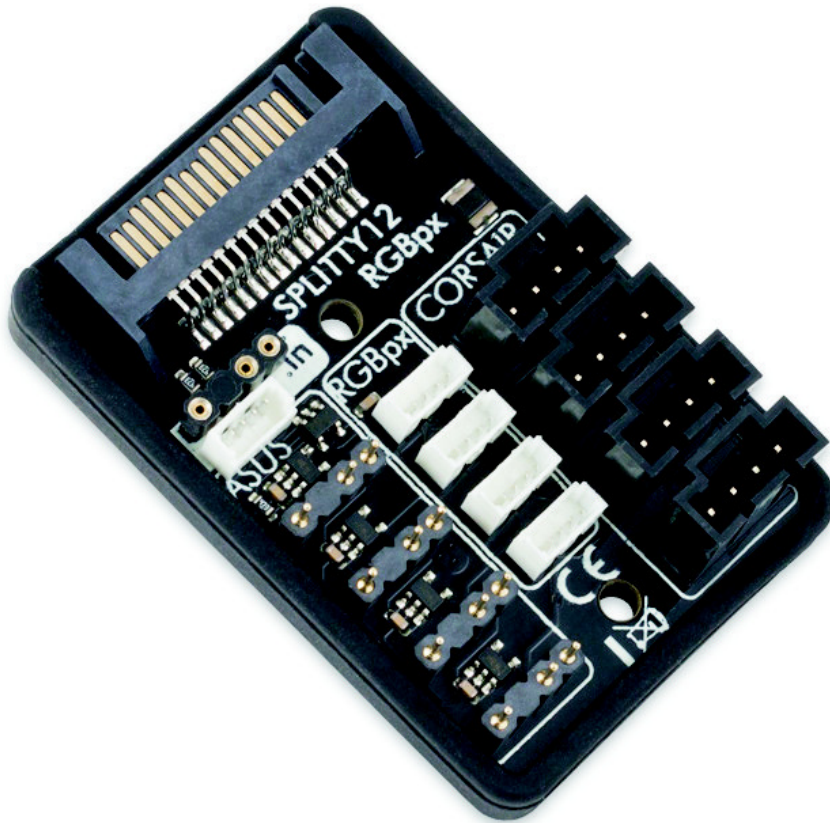


# Instruction manual

## RGBpx Splitty12 ACTIVE



This splitter can be used to connect up to 12 RGBpx/ARGB components to a single RGBpx or ARGB output. All twelve outputs are connected in parallel, all connected components are controlled identically. Power for all outputs is supplied through a SATA power connector.

### Input signal

The digital RGB input can either be supplied through a RGBpx header or a typical motherboard ARGB header, both headers are marked with the word "in". Connect one of the headers to a RGBpx output of an Aqua Computer device or an ARGB output of a motherboard. Only one of the headers may be connected, never both header simultaneously!

## Outputs

In total, twelve outputs are available. All outputs can be used simultaneously:

- four RGBpx headers
- four motherboard type ARGB headers
- four headers for ARGB lighting of fans made by manufacturer Corsair (series QL, LL, HD, ML)

A maximum number of 90 LEDs may be connected to an individual header, in total a maximum number of 200 LEDs may be connected to the splitter. If more LEDs are to be connected, use additional active splitters.

If the maximum allowed current consumption of 4.5 A is significantly exceeded, the splitter will cut power to all outputs. In this case, completely turn off the computer. Check all connected components for short circuits and reduce the total number of connected LEDs before turning the computer on again.

**Attention: Do not exceed the splitter's maximum current rating of 4.5 A!**

## Installation

Use the self-adhesive hook-and-loop strip included in delivery for easy installation, alternatively two mounting holes can be used.

## Scope of delivery

One RGBpx Splitty12 ACTIVE

One RGBpx cable (replacement part no. 53261)

One RGBpx adapter (replacement part no. 53285)

Two screws M3 x 10 mm (replacement part no. 91180)

Two hex nuts M3 (replacement part no. 91017)

Self-adhesive hook-and-loop fastening strip